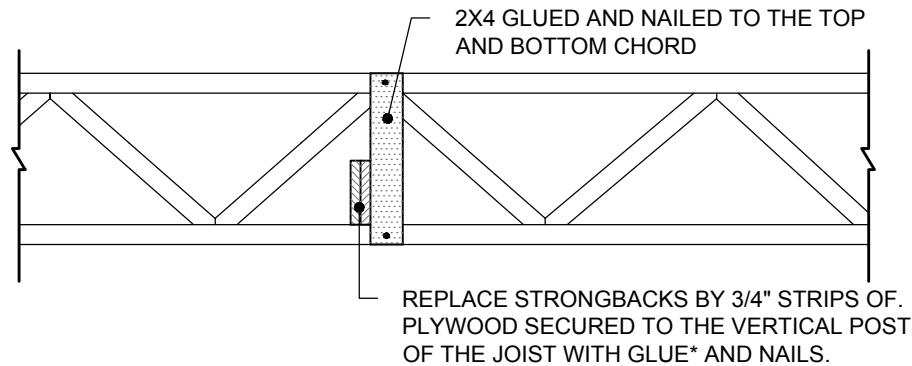


TYPICAL REPAIR METHOD FOR STRONGBACKS REPLACEMENT IN AN EXISTING FLOOR



1. Insert 3/4" X 8'-0" strips of plywood (the same height as the necessary strongbacks) into the joist.
2. Secure the first strip of plywood to the vertical post with glue* and two 2" nails.
3. Alternate joints by at least 2'-0" for the other plywood strips.
4. Secure the second strip of plywood with glue* and a row of 1 1/2" screws @ 16" o.c., at 1" from the top and 1" from the bottom.
5. The strongbacks can be interrupted (e.g., for pipes) provided each is secured to at least three joists on either side of the interruption.

*PL PREMIUM GLUE

RTF-004-20

IMPORTANT NOTICES

If you can't make the repair as specified, please contact the manufacturer at the contact information above.

PL Premium Glue: Refer to Lepage manufacturer for recommendations and restrictions applicable to its use.

Before adding loads and/or moving the joist, the cure time specified by the glue manufacturer must be respected.

Check out the www.openjoisttriforce.com website for the latest updates.

