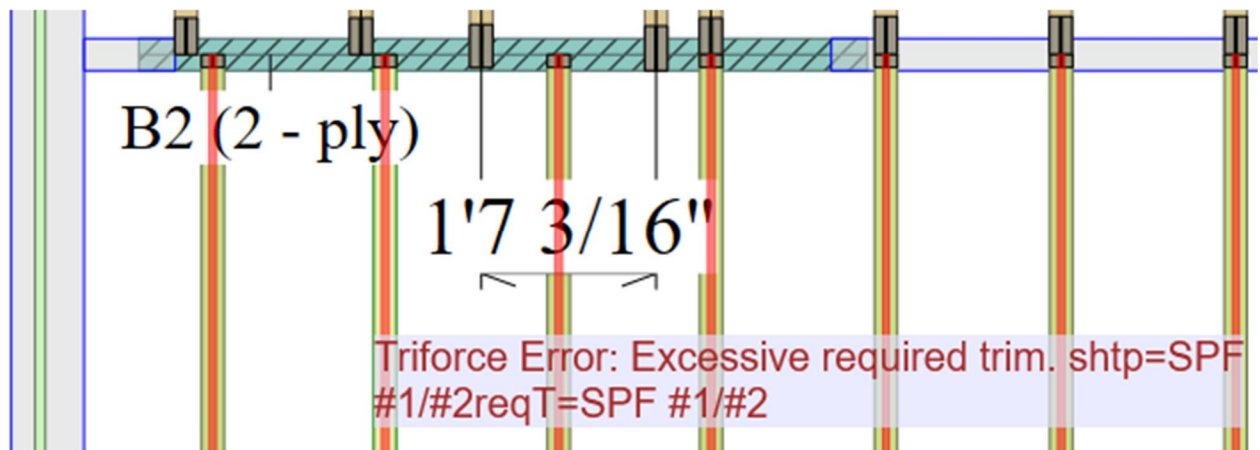


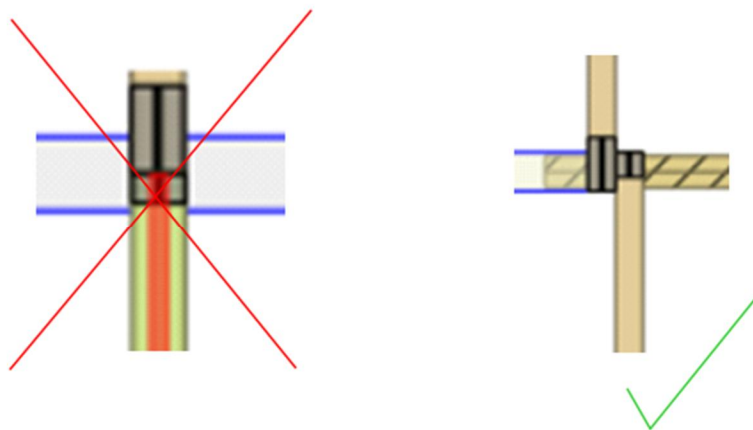
Barrette Structural Distribution, Inc. is proud to announce its new version of TRIFORCE® Analyzer standalone. This update contains small bug fixes and new improvements:

- Included in this software update is a Bug Fix which will no longer allow OPEN JOIST 2000 joists to be trimmed more than 5.5" on each end and a total of no more than 11" on each joist.

You will now see an excessive trim error in iStruct when more than 11" must be trimmed from an OPEN JOIST 2000 joist:



- When this error occurs, the best solution is to off-set the joists in layout so that the appropriate joist length is specified:



INSTALLATION INSTRUCTIONS:

- No external hard drive or flash drive should be plugged in any USB drive while installing or using the software.
 - Your organization may also have security measures in place that require administrative rights to install/update software on your computer. Please contact your IT department if you are getting access or security-related error messages during installation/updating.
 - You will be prompted to enter your email address. Please use the address that you received this notification.
 - Depending on your connection, if the activation does not happen immediately, please wait 10-15 seconds and try again.
-

IMPORTANT NOTICE

In keeping with its ongoing commitment to product development, Barrette Structural Distribution periodically update its TRIFORCE® Analyzer software. To help our engineering team and to assure you a prompt service, please note that we will not support any previous version. Please make sure you update to the latest version and verify your program settings at your earliest convenience.

If you have any question concerning our TRIFORCE® Analyzer, please do not hesitate to contact us:

Email: CAN: triforce-support-can@ebarrette.com

USA : triforce-support-usa@ebarrette.com

Toll Free: 1-800-263-7265
