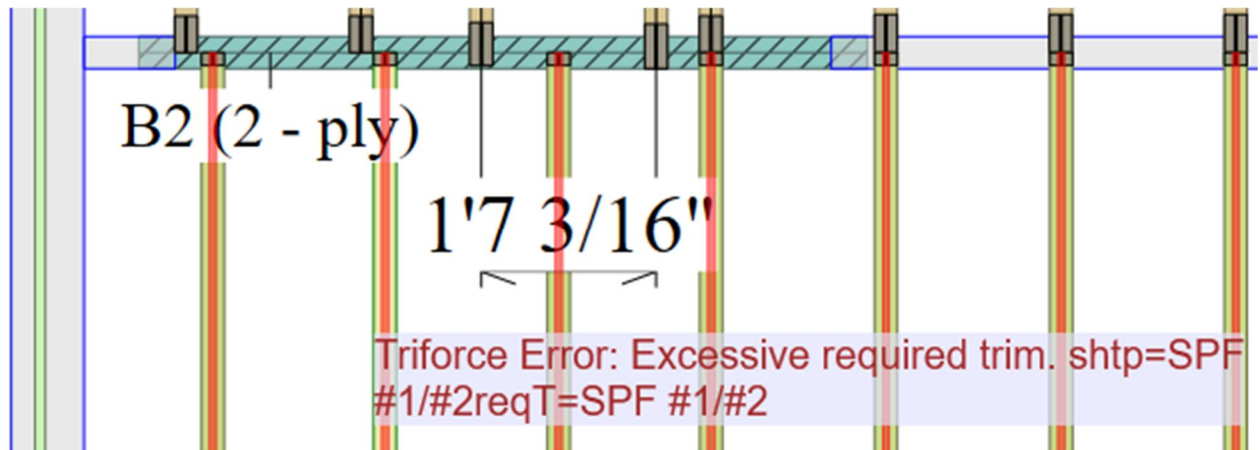


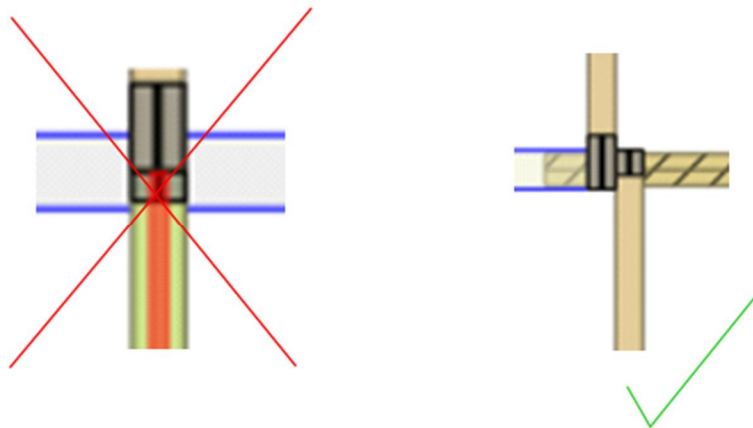
Barrette Structural Distribution, Inc. is proud to announce its new version of TRIFORCE® Analyzer (Plugin). This update contains small bug fixes and new improvements:

- Included in this software update is a Bug Fix which will no longer allow OPEN JOIST 2000 joists to be trimmed more than 5.5" on each end and a total of no more than 11" on each joist.

You will now see an excessive trim error in iStruct when more than 11" must be trimmed from an OPEN JOIST 2000 joist:



- When this error occurs, the best solution is to off-set the joists in layout so that the appropriate joist length is specified:



**IMPORTANT NOTICE**

In keeping with its ongoing commitment to product development, Barrette Structural Distribution periodically update its TRIFORCE® Analyzer software. To help our engineering team and to assure you a prompt service, please note that we will not support any previous version. Please make sure you update to the latest version and verify your program settings at your earliest convenience.

If you have any question concerning our TRIFORCE® Analyzer, please do not hesitate to contact us:

**Email:** CAN: [triforce-support-can@ebarrette.com](mailto:triforce-support-can@ebarrette.com)  
USA : [triforce-support-usa@ebarrette.com](mailto:triforce-support-usa@ebarrette.com)

**Toll Free:** 1-800-263-7265

---