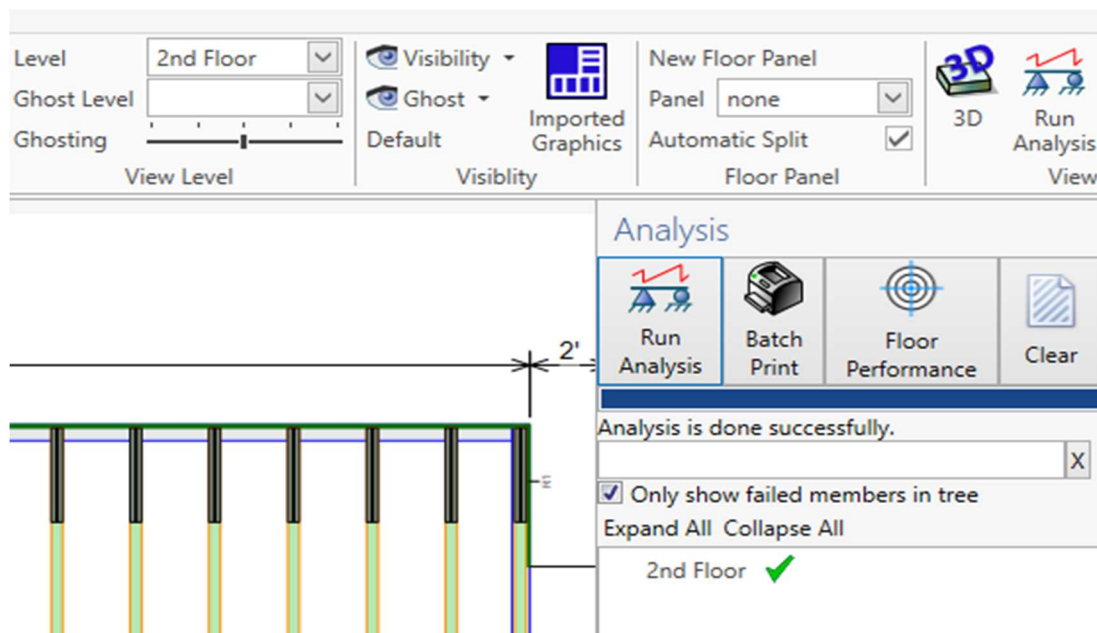


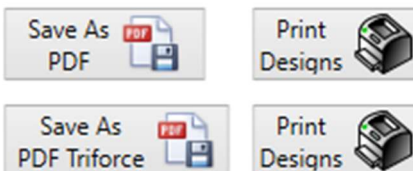
Barrette Structural Distribution, Inc. is proud to announce its new version of the TRIFORCE® Analyzer plugin for iStruct®. A long-awaited improvement is now available as well as a couple of small bug fixes:

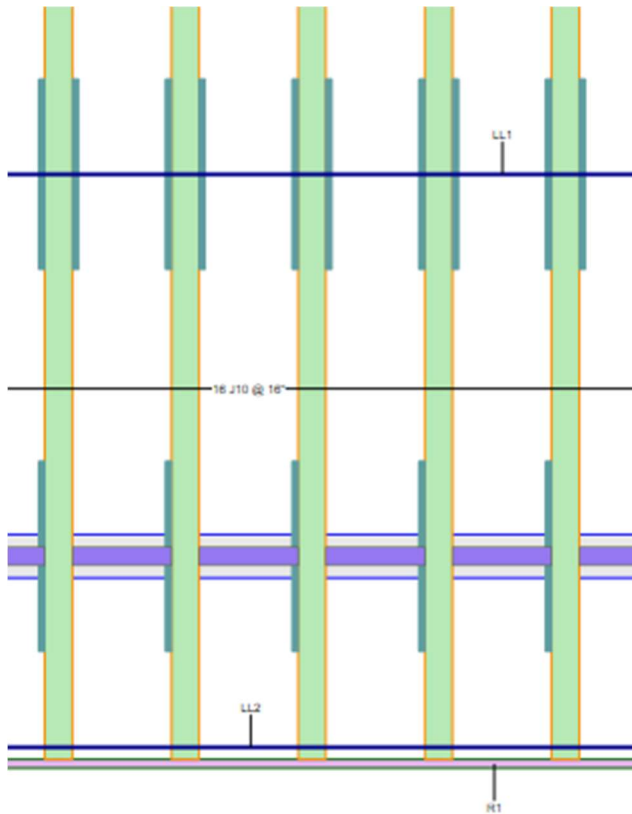
1. Batch Print capability for all TRIFORCE® joists
2. Joist Reinforcement is now shown in layout and on placement guides
3. Ability to change all TRIFORCE® joists to special "S" series joist (including girders)
4. 6' long TRIFORCE® joists are no longer manufactured and have been removed from available inventory

### 1. Batch Print capability for all TRIFORCE® joists:



Hit Batch Print after Running Analysis for PDF and Print options to generate a complete set of joist calc. sheets.



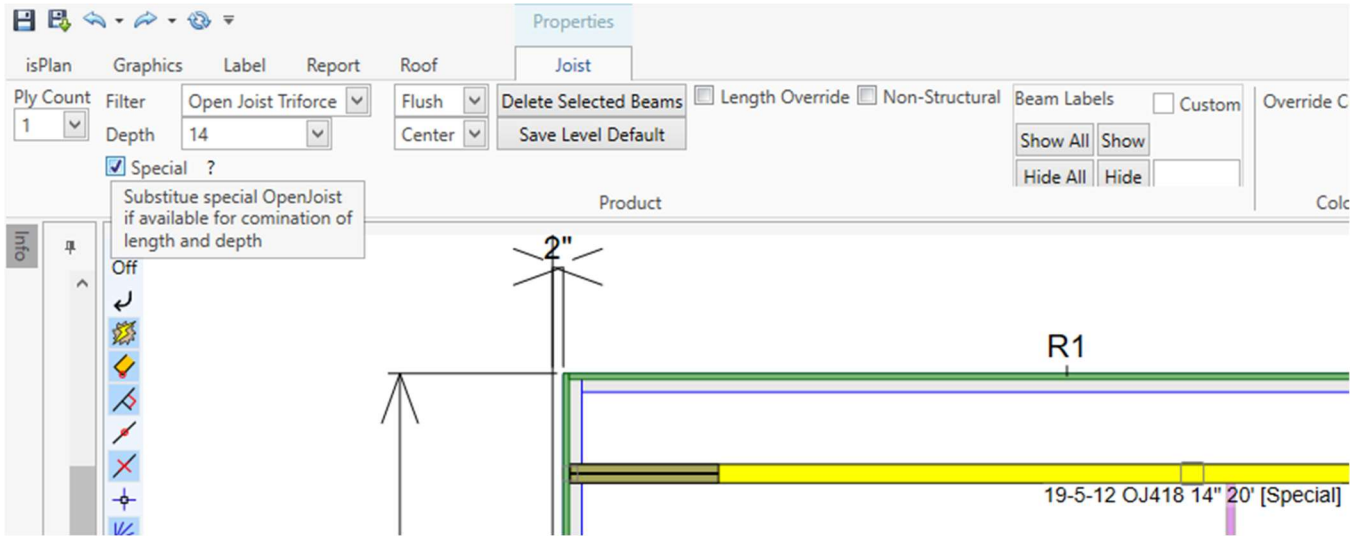
**2. Joist Reinforcement is now shown in layout and on placement guides:**


This improvement now adds a visual depiction (in layout) of the required reinforcement as described in the REINFORCEMENTS section of the TRIFORCE® Analyzer joist calc. sheet output.

**REINFORCEMENTS**

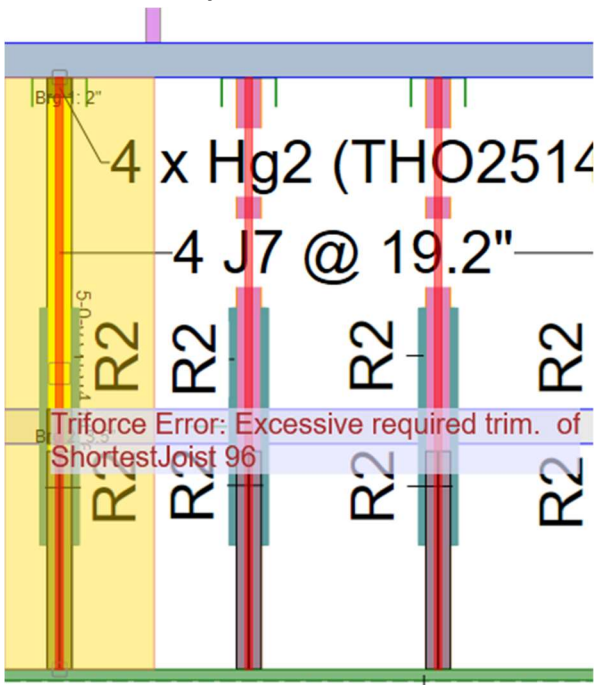
- Add REINFORCEMENT: OSB 20oc (19/32") x 16" of height x 24" of length, starting at 13 5/8" from left end, fixed on ONE side in VERTICAL position to top and bottom chord with PL PREMIUM glue and 3" nails at 5" o.c.
  - Add REINFORCEMENT: OSB 20oc (19/32") x 16" of height x 24" of length, starting at 61 7/8" from left end, fixed on BOTH sides in VERTICAL position to top and bottom chord with PL PREMIUM glue and 3" nails at 5" o.c.
- The bearings capacity and loads crushing calculations assume that if a reinforcement and/or squash block is used, it is in full contact with the bearing and the load.

3. Ability to change all TRIFORCE® joists to special "S" series joist (including girders):



In layout, capture the joist or joists you want to change to special "S" series and check the  **Special** box.

4. 6' long TRIFORCE® joists are no longer manufactured and have been removed from available inventory:



This is the Error message you may see when trying to place or analyze 6' or shorter TRIFORCE® joists.

---

**IMPORTANT NOTICE**

In keeping with our ongoing commitment to product development, Barrette Structural Distribution periodically updates its TRIFORCE® Analyzer software. To help our engineering team and to assure prompt service, please continue to check our installation page for available updates to your TRIFORCE® Analyzer software and note that we will be supporting the newest version only.

Your organization may have security measures in place that require administrative rights to install / update software on your computer. Contact your IT department if you are seeing access or security-related error messages during installation / updating.

If you have any questions concerning our TRIFORCE® Analyzer, please do not hesitate to contact us at:

Email: [triforce-support-usa@ebarrette.com](mailto:triforce-support-usa@ebarrette.com)

Toll Free: 1-800-263-7265

---